

LH 8 SB80.100 SCG V2A (200 079)

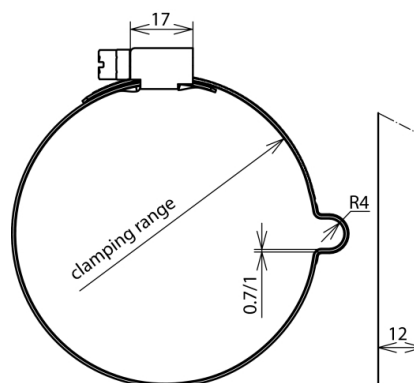
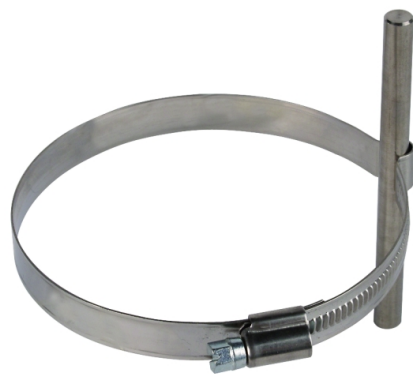


Figure without obligation

Part No.	200 079
Clamping range Ø pipe	80-100 mm
Conductor holder support Rd	8 mm
Conductor leading	fixed
Material of conductor holder	StSt
Screw	screw with worm drive SW7 mm
Material of grip head/screw	StSt
Fixing	with worm drive and bead
Weight	49 g
Customs tariff number	73269098
GTIN	4013364069138
PU	50 pc(s)

We reserve the right to introduce changes in performance, configuration and technology, dimensions, weights and materials in the course of technical progress. The figures are shown without obligation.